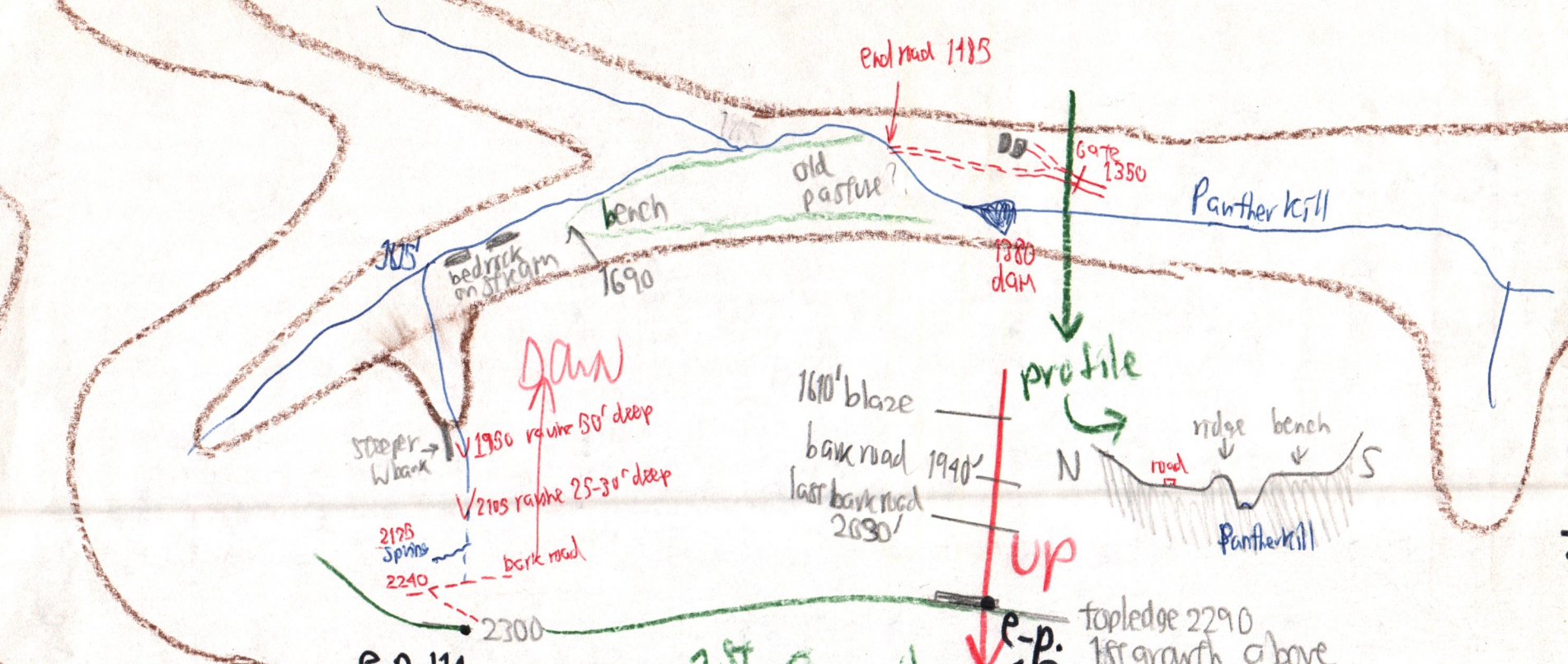


PANTHER OPENING 102-1 7/25/73 with Ed West

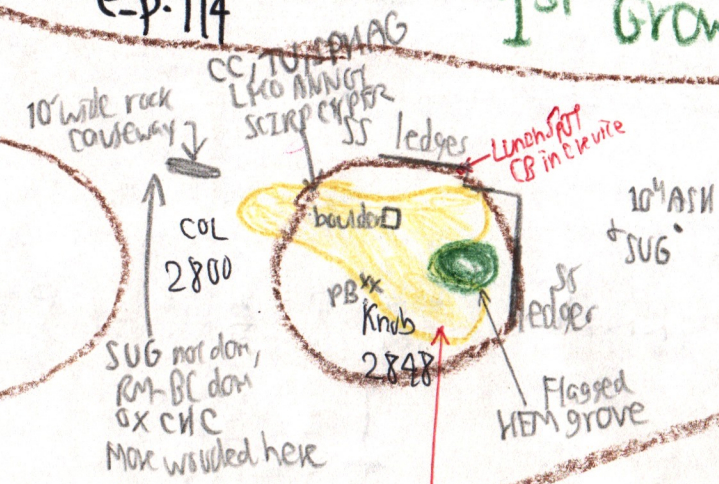
| Base 1350' Pantherkill | 1350' | 30-96" | .00" | | ASH, CARP, BASS, OST, AMEL, NORWAY SPRUCE | |
|---|---------------------------|--------|-------|-------|--|-----------------|
| Blaze | 1500 | .80 | .16 | 150 | Soil on fallen B-2' deep silt red rocky loam, no A ₂ . DNARB, EUP, ARTS | |
| | 1610 | .68 | .28 | 260 | ravine in 15' till. OX, LL | |
| | 1645 | .64 | .32 | 295 | OX-LL. SUB, ASH, HEM, B to 25". Dense Mo. | |
| | 1735 | .54 | .42 | 385 | PA, VB | |
| | 1940 | .32 | .64 | 590 | bark road on contour. Talus. EUP, RLAC, CTAC, HYL0 | |
| Ledgetop | 1970 | .29 | .67 | 620 | | |
| Ledgetop, 20' high | 2030 | .22 | .74 | 680 | 2nd bark road. ASH common. DNARBOP. | |
| | 2090 | .16 | .80 | 740 | | |
| e-p113 Ledgetop 30' to 40' high | 2180 | 30.06 | .90 | 830 | 1st MC, OX common. Some cong talus | |
| | 2290 | 29.94 | 1.02 | 940 | HEM grove above high ledge, 1°. SORB (one), LEUCOBRYUM, POLYPODY | |
| | 2400 | .82 | 1.14 | 1050 | 1.63" / 1500' / 1000' Flat atop series of ledges; SUBs to 25". NYF-LL-IONIC | |
| | 2470 | .74 | 1.22 | 1120 | 1.09" / 1000' VROT, VB, UVUL | |
| | 2510 | .70 | 1.26 | 1160 | AA, Bitterlich Prism Stop MM | |
| | 2575 | .63 | 1.33 | 1225 | 1st BC - HEM 20" x 50' lightning struck one side, alive | |
| On crest of spur | 2620 | .58 | 1.38 | 1270 | DR, OX, LL, S, MO, TB, SUB, B, FTLL, BC to 50' canopy | |
| First Opening | 2740 | .45 | 1.51 | 1390 | Floras of openings see over → | |
| | 2750' | .44 | 1.52 | 1400 | ASH 10", SUB, CINNA, BRACHYEURUM | |
| Main Opening on Knob | 2850' | 29.33" | 1.63 | 1500' | | |
| OWN COL red subsoil, no A ₂ | 2810 | .37 | 1.51 | 1460 | VB, SUB, OX | |
| | 2755 | .43 | 1.45 | 1405 | RTBES LAC, SUBs to 25", highest ASH | |
| | 2745 | .44 | 1.44 | 1395 | TIAR, DISJUNCTA | |
| | 2720 | .46 | 1.42 | 1370 | MITCH, MM, OX, POLYPODY | |
| | 2640 | .55 | 1.33 | 1290 | GAL. HYL0 & MINTUM common on rock | |
| | 2630 | .66 | 1.22 | 1180 | SAMB. UVUL. DISJUNCTA. OX-AA-MM | |
| | 2490 | .70 | 1.18 | 1140 | CB colony. ARIS-STREPT. CTAC abun | |
| | 2435 | .76 | 1.12 | 1085 | several ASH to 15" LAP RLAC in fruit | |
| | 2375 | .82 | 1.06 | 1025 | HEM grove on W; below dense RS; YB to 25" | |
| | 2340 | .86 | 1.02 | 990 | BASS + bark road | |
| | Bark road | 2240 | 29.96 | .92 | 890 | VA |
| | Spring | 2175 | 30.03 | .85 | 825 | |
| | Ravine in 25' to 30' till | 2105 | .10 | .78 | 755 | |
| | " " 50' till | 1950 | .26 | .62 | 600 | abund-HEM repro |
| | CONFLUENCE | 1815 | .40 | .48 | 465 | IMP, CTAC, OX |
| 1775 | | .44 | .44 | 425 | bedrock S side | |
| 1700 | | .52 | .36 | 350 | PA, ADIV, max bedrock | |
| 1690 | | .53 | .35 | 340 | bench on S; OST | |
| 1580 | | .64 | .24 | 230 | wide flat; old pasture - HEM under SUB, YB, HAM | |
| 1535 | | .69 | .19 | 185 | BB ASH | |
| 1525 | | .70 | .18 | 175 | LYCO COMP. | |
| ROAD BEGINS at FORD | 1505 | .71 | .17 | 165 | | |
| | 1485 | .74 | .14 | 135 | Panther kill flows from N to S side of valley | |
| | 1465 | .76 | .12 | 115 | Highest bldg & clearing | |
| | 1380 | .85 | .03 | 30 | Dam | |
| Base 1350' Pantherkill | 1350' | 30.88 | .00 | 0 | Gate of Living Face Property; Base | |

Disintegrating ledges on 30° slope, none continuous

102-2



Panther Spur SE



Rough Plot 2560

Sandstone dips 2 to 3° SW. view to Siler, Cornell, S end G. Ledge, Panther.

2nd opening ca. 4 to 5 acres

| | | |
|--------------|------------|-------|
| POLY. JUNIP. | MO | SPNAG |
| MC | PB | AA |
| VACC ANG | RM | AN |
| LYCO OBS | LEUCOBRYUM | |
| DESCHAMPSTA | PTN | |

1st Opening ca. 2 acres

| | | |
|----------------|-----|-------------|
| Vacc ang | BC | Sorb seedl. |
| Deschampsia | HEM | RS |
| Cladonia | RM | PCICL |
| Polytrichum j. | MC | AMEL |
| Lyco clav. | YB | |
| | MO | |